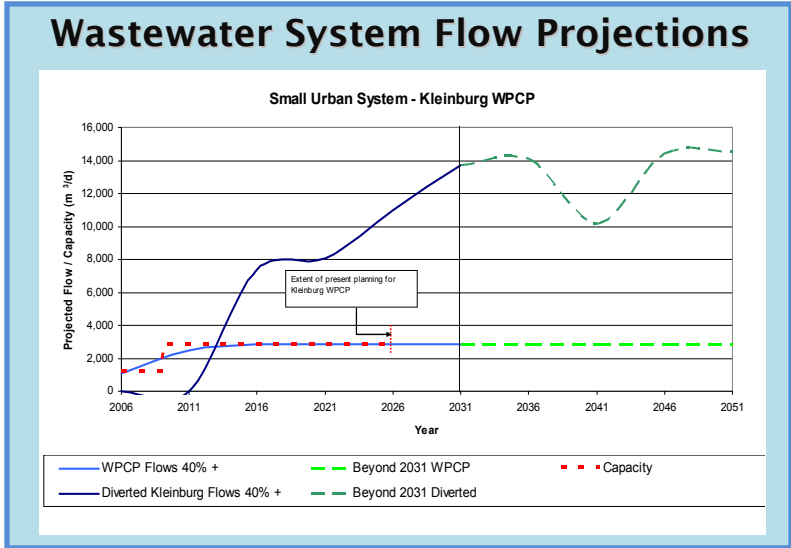
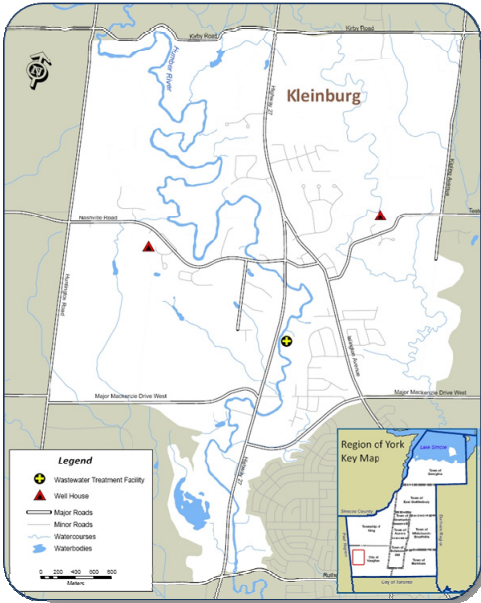


# Wastewater Servicing Plan Kleinburg



Kleinburg Wastewater Servicing Projects	Total Project Estimated Costs	Time Period Required
Wastewater servicing to 2051	\$107,800,000	2006-2016

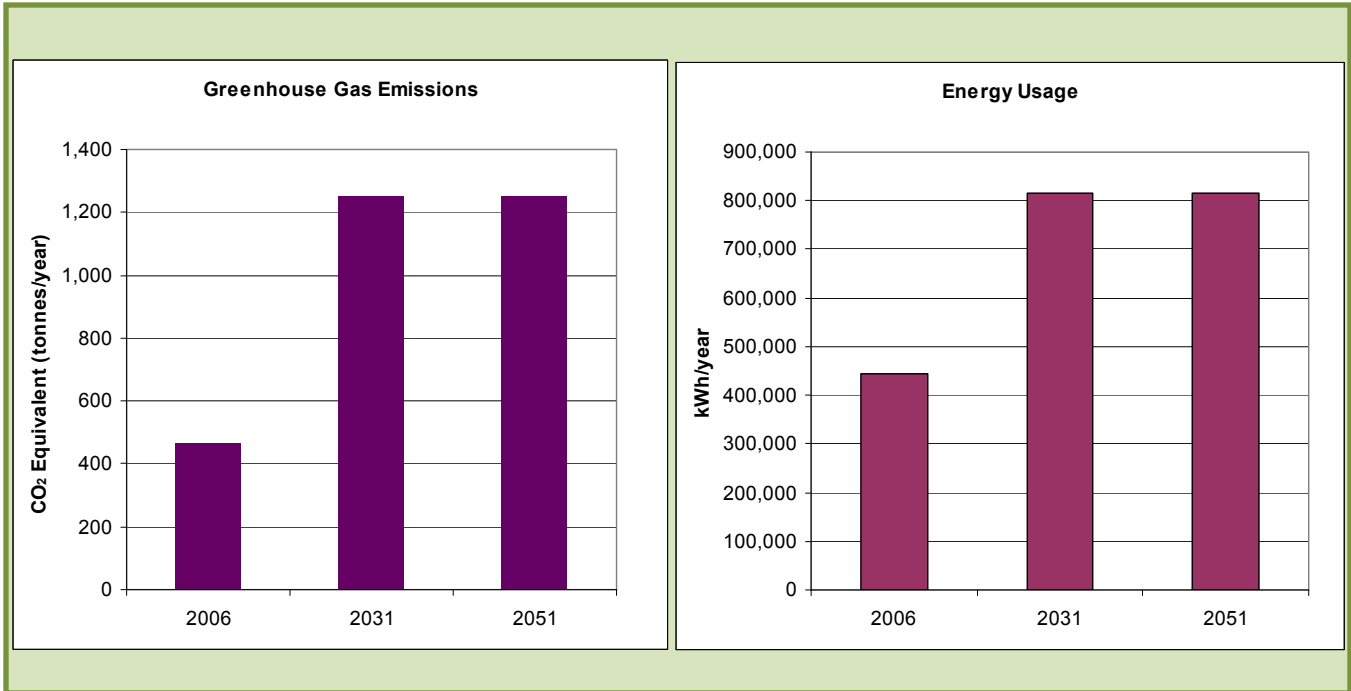
## Kleinburg WPCP – Current and Projected Maximum Effluent Loadings to Humber River (Lake Ontario)

Year	Average Day Flow (m <sup>3</sup> /d)	cBOD <sub>5</sub> (kg/year)	TSS (kg/year)	Total P (kg/year)	NH <sub>3</sub> -N (kg/year)
2006	1,100 <sup>1</sup>	5,800 <sup>2</sup>	5,800 <sup>2</sup>	120 <sup>2</sup>	260 <sup>2</sup>
2031	2,900 <sup>3</sup>	10,500 <sup>4</sup>	10,500 <sup>4</sup>	320 <sup>4</sup>	710 <sup>4</sup>
2051	2,900 <sup>3</sup>	10,500 <sup>4</sup>	10,500 <sup>4</sup>	320 <sup>4</sup>	710 <sup>4</sup>

**Notes:**

- Actual 2006 average daily flow.
- Loadings are based on current effluent limits and wastewater flows for existing WPCP.
- Projected wastewater flow based on community growth strategy; includes the benefit of current water efficiency strategy.
- Loadings are based on proposed effluent limits for WPCP expansion to be completed in 2009 and projected wastewater flows.

# Wastewater Servicing Plan Kleinburg



## Wastewater Servicing Outlook

### To 2031

- Growth in total wastewater flows is expected to increase by a factor of 15 by 2031.
- It is expected that demand will exceed the expanded WPCP capacity of 2,874 m<sup>3</sup>/d by 2016; as such, wastewater flows in excess of the WPCP capacity will be diverted to the North West Vaughan Collector Trunk Sewer.
- The Kleinburg WPCP discharges to the Humber River, which is presently categorized as Policy 2 with respect to phosphorous.
- No additional phosphorus loadings are possible and any future flows in excess of present capacity will require a higher degree treatment.

### Beyond 2031

- Growth in wastewater flow is expected to increase by a factor of 16 by 2051.
- It is expected that the expanded WPCP will operate at its rated capacity through to 2051 with excess flows diverted to the North West Vaughan Collector.